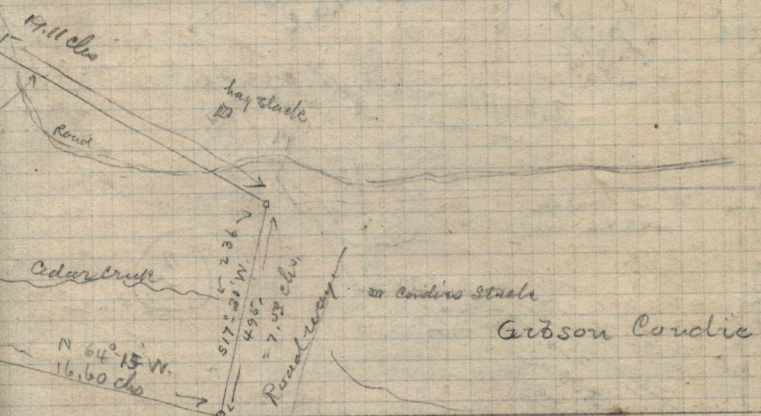


a = 439 ft
 boulder stone 19 x 11 x 6
 and stone m.



corrected meanders, latitude & Departures
 John Hopkins, claim, up Cedar

	- N -	- S -	- E -	- W -	
1/4 E	16.70	8.03	14.64		
1/4 E	14.00	.92	13.97		
1/4 E	9.30	4.08	8.36		
1/4 E	19.10	8.33	17.08		
1/2 W	7.50	7.15		2.25	
4 1/4 W	16.50	7.17		14.85	
4 1/4 W	25.20	6.84		24.25	
2 1/2 W	22.30	13.57		17.69	
est	6.60			6.60	
v	.90	.92			

to M.C.
 in Sec. 2,
 to M.C.
 in Sec. 2,
 to M.C.